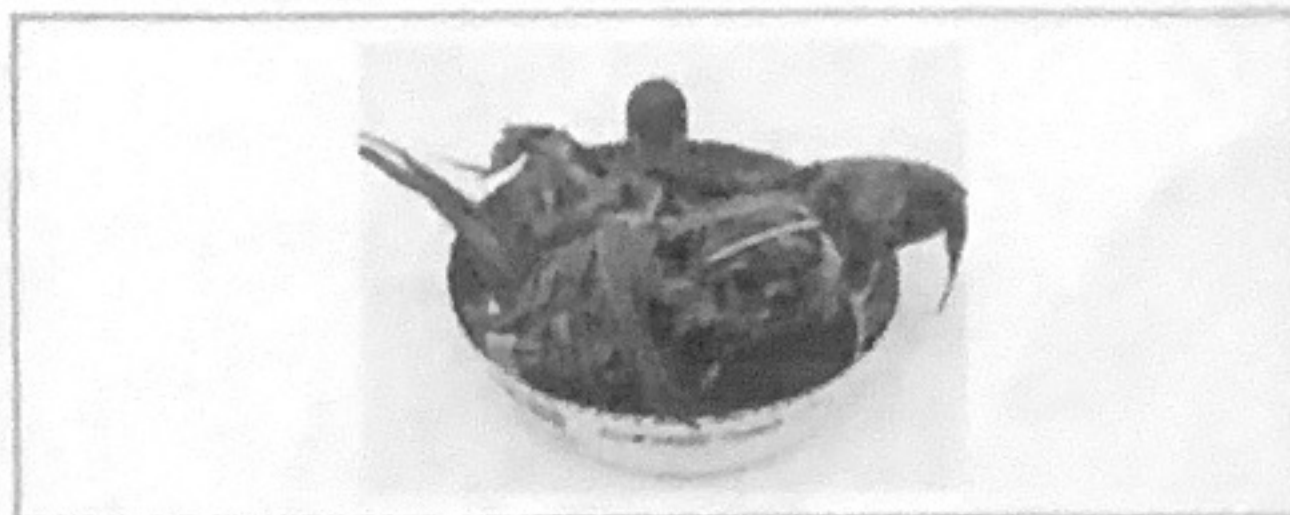
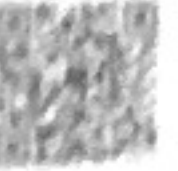


WNC CBD
 PO Box 17865
 Asheville, NC 28816
 info@wnc-cbd.com
 828-329-5835

Sample: 06-21-2023-34992W2647
 Sample Received: 06/21/2023
 Report Created: 06/23/2023, Expires: 06/23/2024

Han Solo 1
 Plant uncured



24.247 % Total THC	0.237 % Δ-9 THC
29.453 % Total Cannabinoids	<LOQ % Total CBD

Cannabinoids

Complete

(Testing Method: HPLC, CON-P-3000)
 Date Tested: 06/21/2023

Analyte	LOQ	LOQ	Mass	Mass	
	%	%	%	mg/g	
Δ-8-Tetrahydrocannabinol (Δ-8-THC)	0.0493	0.0739	ND	ND	
Δ-9-Tetrahydrocannabinol (Δ-9-THC)	0.0493	0.0739	0.237	2.374	
Δ-9-Tetrahydrocannabinolic Acid (THCA-A)	0.0493	0.0739	27.376	273.764	
Δ-9-Tetrahydrocannabinol (Δ-9-THCP)	0.0493	0.0739	ND	ND	
Δ-9-Tetrahydrocannabivarin (Δ-9-THCV)	0.0493	0.0739	ND	ND	
Δ-9-Tetrahydrocannabivarinic Acid (Δ-9-THCVA)	0.0493	0.0739	<LOQ	<LOQ	
R-Δ-10-Tetrahydrocannabinol (R-Δ-10-THC)	0.0493	0.0739	ND	ND	
S-Δ-10-Tetrahydrocannabinol (S-Δ-10-THC)	0.0493	0.0739	ND	ND	
9R-Hexahydrocannabinol (9R-HHC)	0.0493	0.0739	ND	ND	
9S-Hexahydrocannabinol (9S-HHC)	0.0493	0.0739	ND	ND	
Tetrahydrocannabinol Acetate (THCA)	0.0493	0.0739	ND	ND	
Cannabivarin (CBV)	0.0493	0.0739	ND	ND	
Cannabivarinic Acid (CBVA)	0.0493	0.0739	ND	ND	
Cannabidiol (CBD)	0.0493	0.0739	ND	ND	
Cannabidiolic Acid (CBDA)	0.0463	0.0739	<LOQ	<LOQ	
Cannabigerol (CBG)	0.0493	0.0739	<LOQ	<LOQ	
Cannabigerolic Acid (CBGA)	0.0493	0.0739	1.442	14.424	
Cannabinol (CBN)	0.0493	0.0739	ND	ND	
Cannabinolic Acid (CBNA)	0.0493	0.0739	ND	ND	
Cannabichromene (CBC)	0.0493	0.0739	ND	ND	
Cannabichromenic Acid (CBCA)	0.0493	0.0739	0.397	3.970	
Total			29.453	294.532	

Total THC = THCA * 0.877 + Δ-9-THC; Total CBD = CBDA * 0.877 + CBD; LOQ = Limit of Quantitation; ND = Not Detected.

Total THC Measurement of Uncertainty: ± 0.020%
 Total CBD Measurement of Uncertainty: ± 2.000%
 THCA potency analysis does not designate quantitative specificity of Δ-8-THCA and Δ-9-THCA isomers.



New Bloom Labs
 6121 Heritage Park Drive, A500
 Chattanooga, TN 37416
 (844) 837-8223
 TN DEA# RNC0563975

Natalie Siracusa
 Natalie Siracusa
 Laboratory Director

Powered by relIMS
 info@relims.com